

Composition

Framing & Balance

Composition is the
arrangement of visual
elements in a 2d
picture plane

The Elements of 2d Visual Design

- Point
- Line
- Shape
- Value
- Texture
- Color
- Space

The Principles of Visual Design

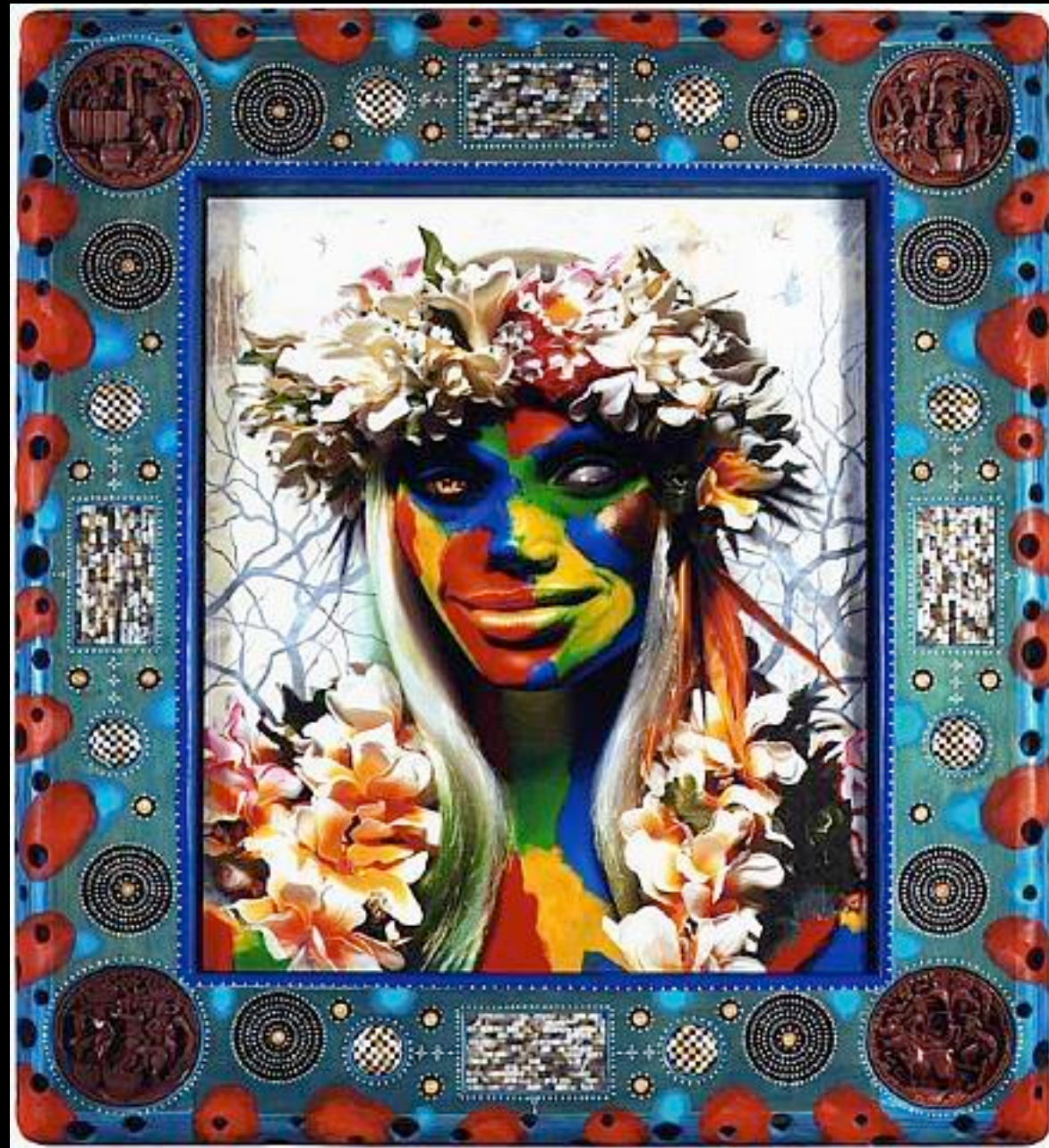
- Harmony
- Variety
- Balance
- Proportion
- Dominance
- Movement
- Economy

The Frame

- separates the image from the rest of the world
- creates the context in which the work is viewed
- borders and bleeds (no borders)
- decorated or custom frames



Rembrandt



Ashley Bickerton



Mark Rothko

Framing

- inclusion and exclusion - the authors view
- what is left out may be as important as what is left in
- the artist has control over what is allowed in the picture

Format

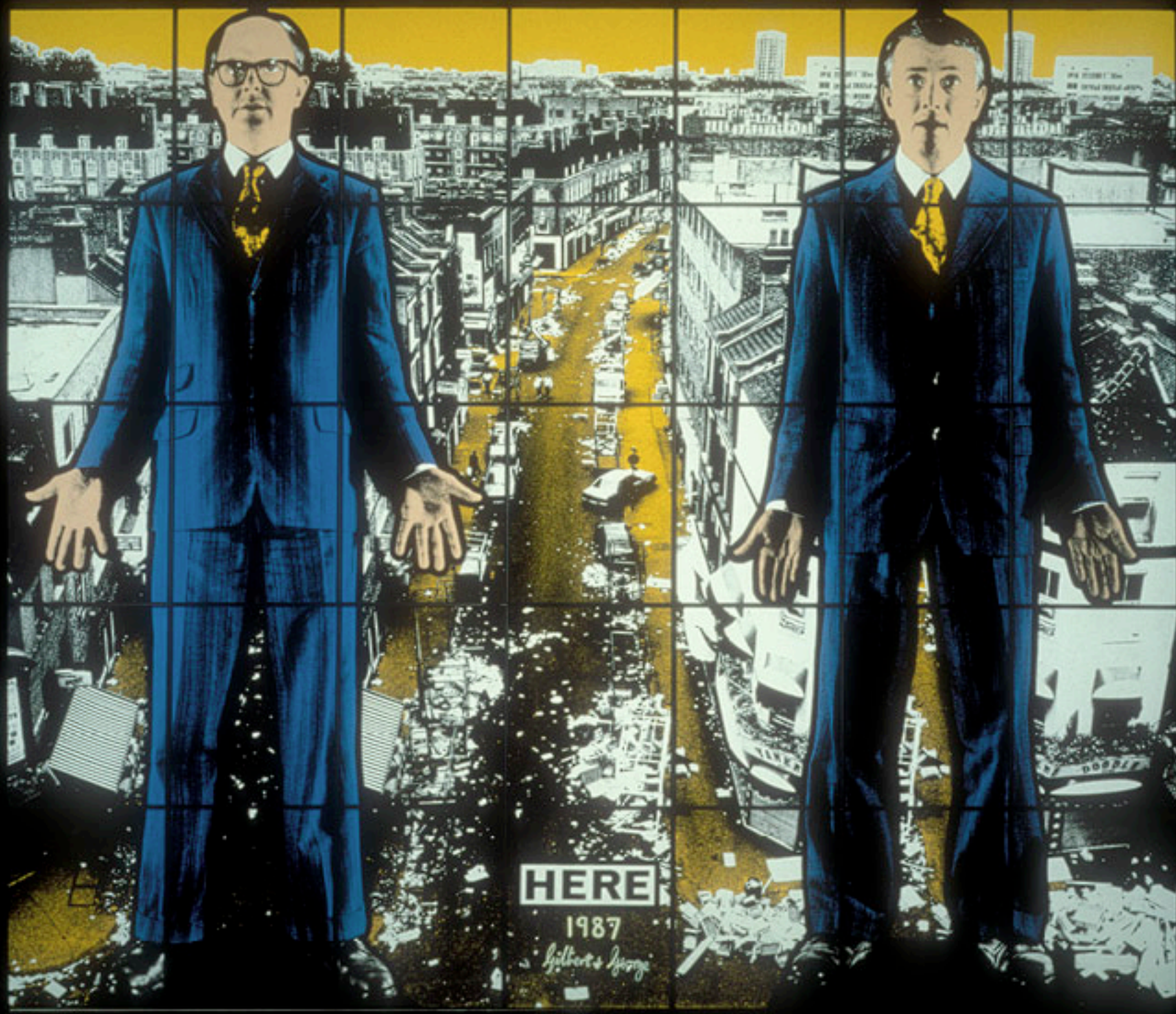
- Horizontal - Landscape
- Vertical - Portrait
- Square
- Circular - tondos
- Shaped



Henri Cartier-Bresson



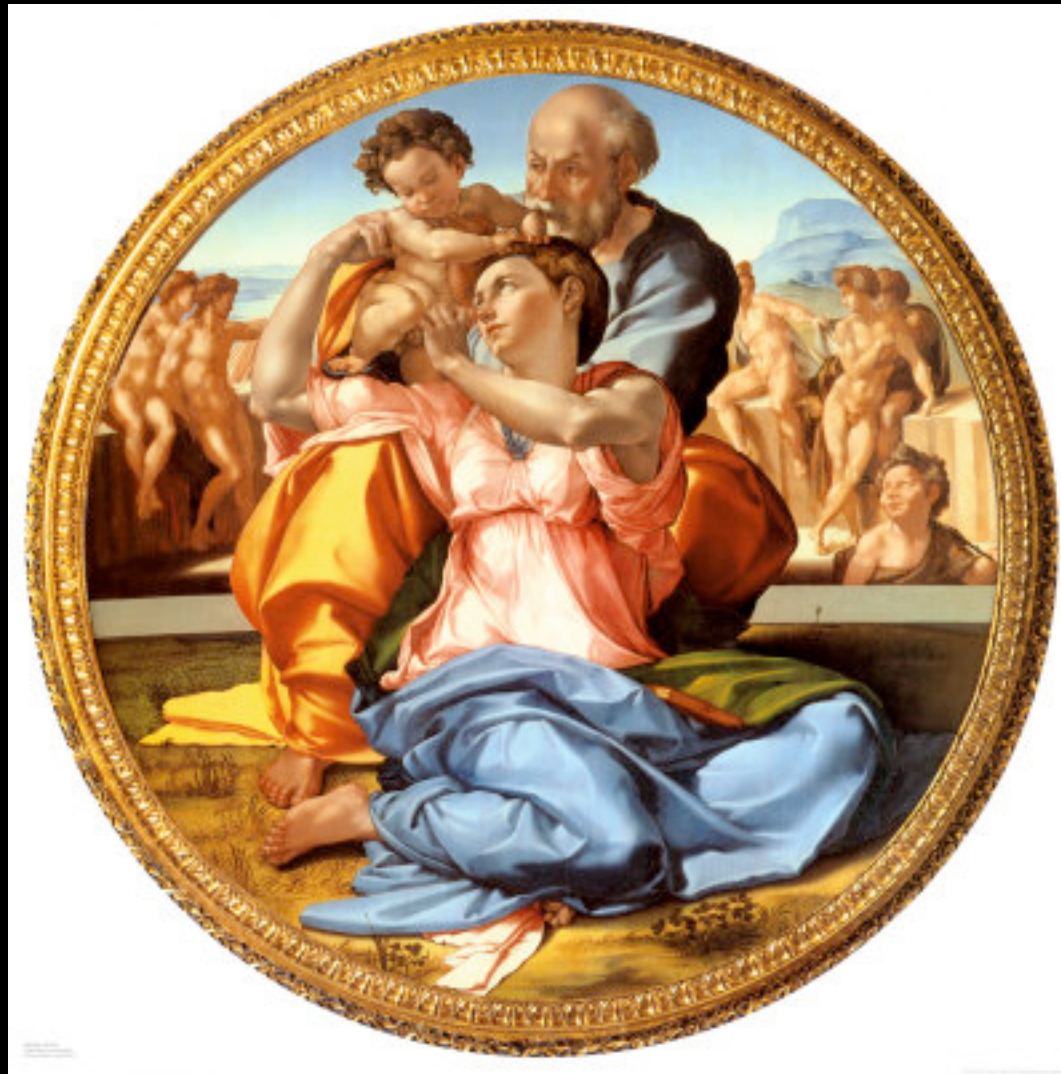
Jean Dubuffet



Gilbert & George



Joel Peter Witkin



Michelangelo



Frank Stella

Balance



- a harmonious relationship of elements

Symmetrical Balance

- Real symmetry
- Approximate symmetry
- Static and stable

Real Symmetry



Approximate Symmetry



Horizontal Symmetry



- symmetry across the horizon

Vertical Symmetry



- symmetry across a vertical axis

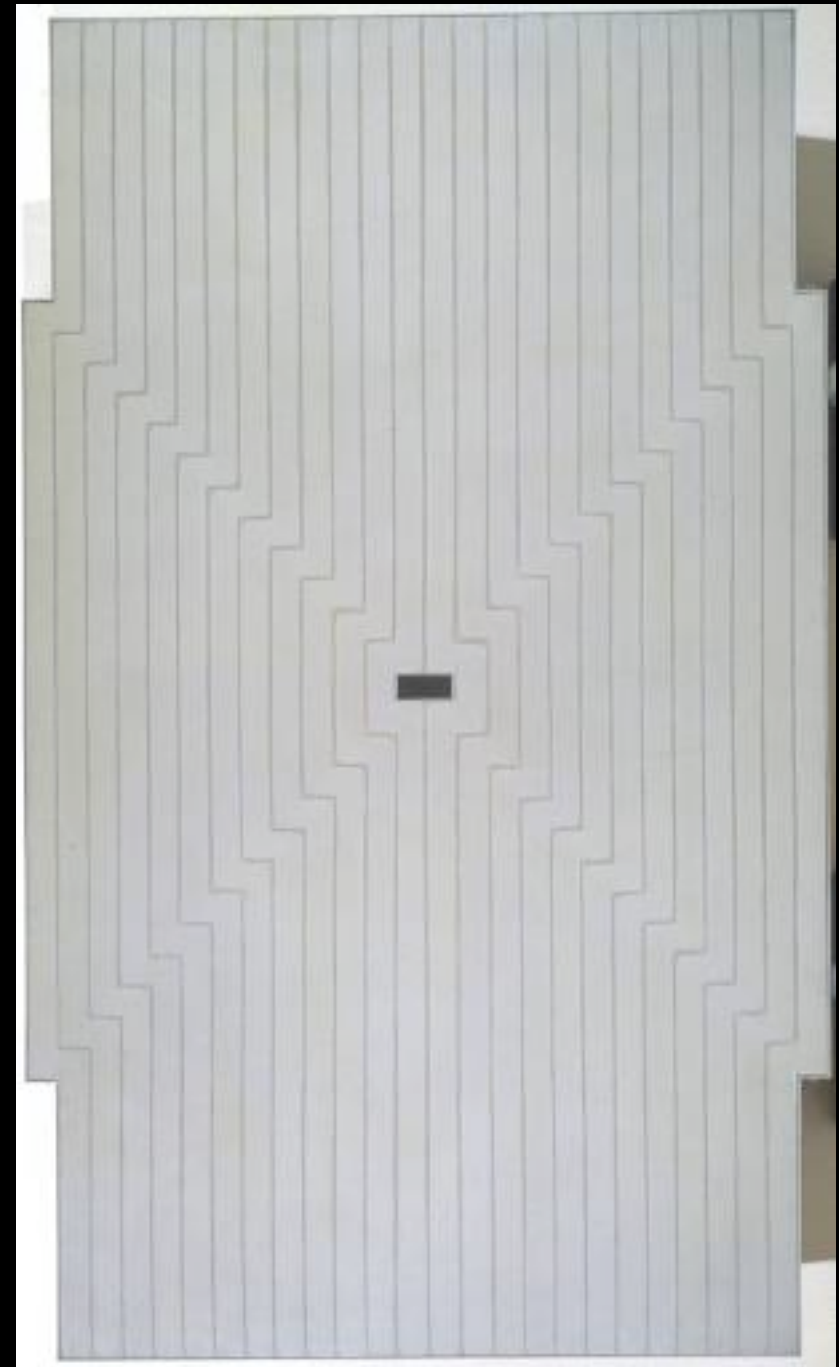
Axial Symmetry



- symmetry along an axis

Radial Symmetry

- symmetry radiating from a circle

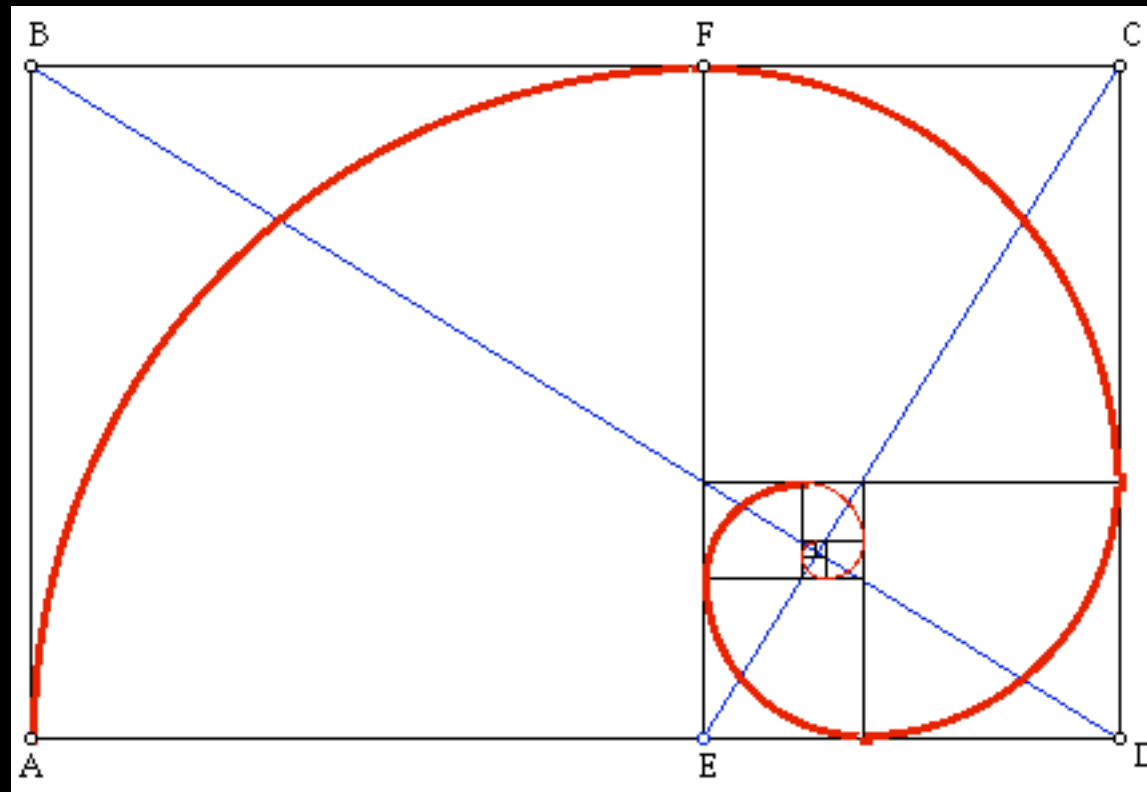


Asymmetrical Balance



- balanced but not symmetrical
- implies motion, energy, change

Golden Mean



- fractal division of image plane into squares
- classical rule for harmonious compositions

Rule of Thirds



- division of the picture plane into thirds

Allover Composition



- uses texture or pattern covering the entire picture plane